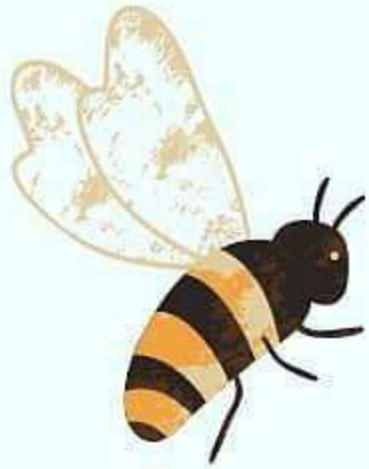
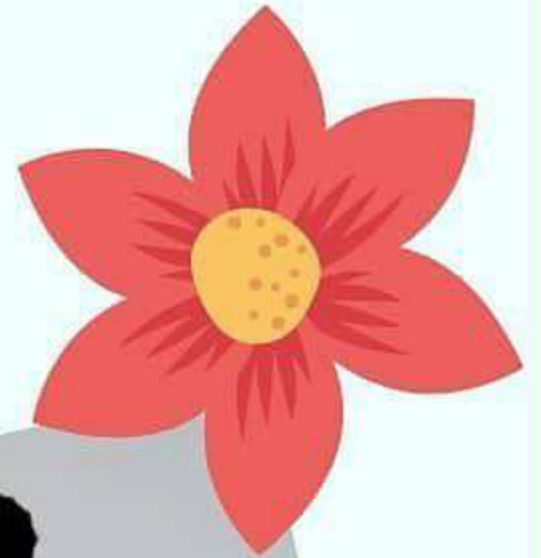


# MISS BEE



FREE PATTERN BY  
[@ALEKSANDRA\\_CROCHET](#)



This Pattern is an original pattern by [@aleksandra\\_crochet](#) ©2020.

Abbreviations:

dec = decrease

inc = increase

sc = single crochet

dc = double crochet

st = stitch

( ) x... = repeat instructions  
in brackets ... times

Crochet all followed, without  
closing the rounds.

Yarn:

I used Performance Cotton Queen  
125m/50g and 2,5 mm crochet hook.

Bee is about 12 cm high.

Safety eyes 7 mm



# Head and body

Stuff as you crochet.  
Start with yellow.

1. 6 sc in magic ring /6
2. inc x6 /12
3. (1 sc, 1 inc) x6 /18
4. (2 sc, 1 inc) x6 /24
5. (3 sc, 1 inc) x6 /30
6. (4 sc, 1 inc) x6 /36
7. (5 sc, 1 inc) x6 /42
8. (6 sc, 1 inc) x6 /48
- 9-14. 1 sc in each st /48



Insert safety eyes between rounds 9. and 10. with 6 st distance between them.

15. (6 sc, 1 dec) x6 /42
16. (5 sc, 1 dec) x6 /36
17. (4 sc, 1 dec) x6 /30
18. (3 sc, 1 dec) x6 /24
19. (2 sc, 1 dec) x6 /18
20. (1 sc, 1 dec) x6 /12
21. (1 sc, 1 inc) x6 /18
22. (2 sc, 1 inc) x6 /24
23. (3 sc, 1 inc) x6 /30
- 24-25. 1 sc in each st /30



Change to black

26. (4 sc, 1 inc) x6 /36

27-28. 1 sc in each st /36

Change to yellow

29. (5 sc, 1 inc) x6 /42

30-31. 1 sc in each st /42

Change to black

32. (6 sc, 1 inc) x6 /48

33-34. 1 sc in each st /48

Change to yellow

35-37. 1 sc in each st /48



Change to black

38-40. 1 sc in each st /48

41. (6 sc, 1 dec) x6 /42

42. (5 sc, 1 dec) x6 /36

43. (4 sc, 1 dec) x6 /30

44. (3 sc, 1 dec) x6 /24

45. (2 sc, 1 dec) x6 /18

46. (1 sc, 1 dec) x6 /12

47. dec x6 /6

Fasten off. Embroider a smile.



This Pattern is an original pattern by @aleksandra\_crochet ©2020.

## Legs x2

Start with black yarn

1. 6 sc in magic ring /6
2. inc x6 /12
3. (1 sc, 1 inc) x6 /18
4. 1 sc in each st /18
5. 6 sc, 6 dec /12
6. 7 sc, 2 dec, 1 sc /10
- 7-10. 1 sc in each st /10

Change to yellow

- 11-14. 1 sc in each st /10

Stuff tightly.

Fasten off leaving a long tail.

## Arms x2

With yellow yarn

1. 5 sc in magic ring /5
2. inc x5 /10
- 3-16. 1 sc in each st /10

Stuff just a little.

Fasten off leaving a long tail.



## Wings x2

With white yarn

1. 6 sc in magic ring /6
2. inc x6 /12
3. (1 sc, 1 inc) x6 /18
4. (2 sc, 1 inc) x6 /24
5. (3 sc, 1 inc) x6 /30
6. (4 sc, 1 inc) x6 /36
- 7-9. 1 sc in each st /36
10. (4 sc, 1 dec) x6 /30
11. 1 sc in each st /30
12. (3 sc, 1 dec) x6 /24
13. 1 sc in each st /24
14. (2 sc, 1 dec) x6 /18
15. 1 sc in each st /18

Fasten off leaving a long tail.  
Flatten the wings, don't stuff.

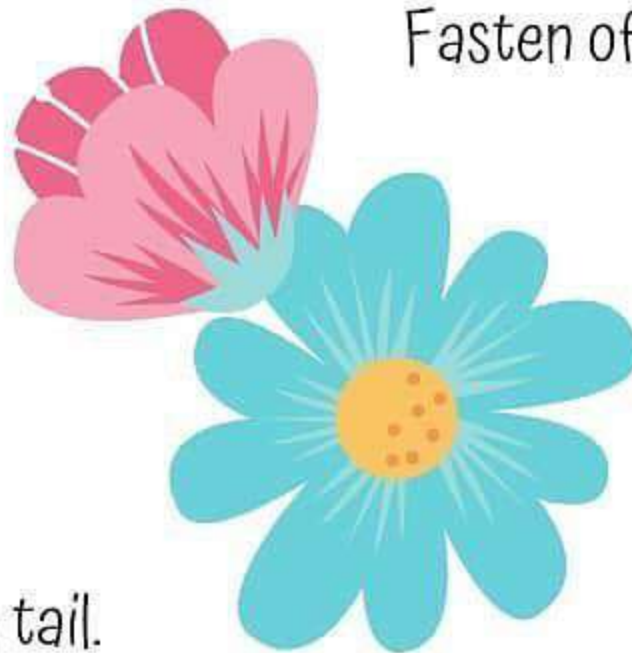
## Antennae x2

With black yarn

1. 4 sc in magic ring /4
2. inc x 4 /8
3. (1 sc, 1 inc) x4 /12
4. 1 sc in each st /12
5. (1 sc, 1 dec) x4 /8
- 6-9. 1 sc in each st /8

Stuff.

Fasten off leaving a long tail.



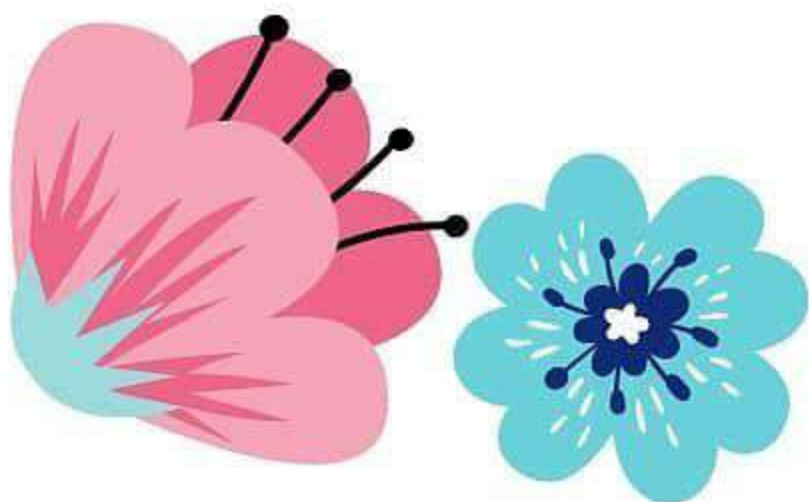
# Assembly

Sew the antennae to the head more or less between rounds 4-6 (counting from the top of the head).

Sew the arms to the body at the height of round 20. (counting from the top of the head).

Sew the legs to the body more or less between rounds 37-39 (counting from the top of the head).

Sew the wings to the body just behind the arms (there should be some distance between them).



# Headband

Chain (adjust the length to your bee's head size), sc in the second st from the hook, sc to the end, connect both ends with a slip stitch.

# Flower

Chain 3, dc in the first chain (from the beginning), chain 2, slst in the first chain.

(Chain 2, dc in the first chain, chain 2, slst in the first chain)  
x repeat 3 more times and fasten off leaving a tail.

Sew the flower to the band, sew a small pearl or a bead in the middle.

**Enjoy your new amigurumi! :)**

